



University of California  
Agriculture and Natural Resources

Informatics and GIS Program

# WebGIS Workshop: Creating your own Web Maps

Friday, May 8th, 2015, 8am to 12pm

## Hopland Research and Extension Center

4070 University Road, Hopland, CA

<http://igis.ucanr.edu/igiscomponents/Training/WebGISHREC>

**Goal:** Provide an overview of geospatial technology to natural resource practitioners and Cooperative Extension educators with hands on experience using practical examples.

**Audience:** UC Cooperative Extension Advisors and Specialists as well as public and private resource professionals.

**Workshop Content:** This workshop has been designed for participants interested in web mapping with little to no GIS or web experience. An introductory presentation will get you up to speed on web mapping, and the Google Maps API. You will then follow an interactive exercise that will have you creating basic web maps using JavaScripts, Google Fusion Tables, CartoDB and ArcGIS Online software.

This course content is the result of a collaborative effort between UC ANR IGIS Statewide Program: <http://igis.ucanr.edu>, and UC Berkeley's Geospatial Innovation Facility (GIF): <http://gif.berkeley.edu/>.

For information regarding the accompanying GIS for Agriculture workshop on May 7<sup>th</sup>, go to <http://igis.ucanr.edu/igiscomponents/Training/GISforRangelandHREC>



**Requirement:** Participants must bring a **laptop computer** with a recent version **Notepad ++** software installed. Participants also must have an active **Google account** with access to Google Drive, and an online account with **CartoDB**.

For information about downloading Notepad ++, and preparing you Google and CartoDB accounts (all free of charge), please go to:

<http://ucanr.edu/sites/IGIStraining/WebGIS>

**When & Where:** May 8<sup>th</sup>, 2015, from 8am to 12pm.

4070 University Road, Hopland, Ca. 95449

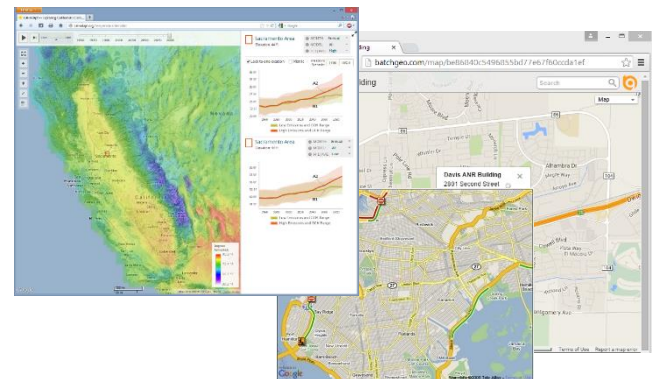
Directions and map link: [http://hrec.ucanr.edu/About\\_Us/Directions\\_Map](http://hrec.ucanr.edu/About_Us/Directions_Map)

**Cost:** \$30 for members of UC ANR (account # and contact information required), and \$60 for non-UC affiliates.

The course cost will include a meal and refreshments. UC ANR members' costs will be partially supported by the IGIS Statewide Program.

**Register:** Go to <http://ucanr.edu/survey/survey.cfm?surveynumber=14835> to register. Registration is limited to 25 participants, so please register early.

**Contact:** Sean Hogan, 530-750-1322, [sdhogan@ucanr.edu](mailto:sdhogan@ucanr.edu)



Partial support for this workshop is provided  
through the IGIS Statewide Program

The University of California Division of Agriculture & Natural Resources (ANR) prohibits discrimination or harassment of any person in any of its programs or activities (Complete nondiscrimination policy statement can be found at <http://ucanr.org/sites/anrstaff/files/107734.doc>)

Inquiries regarding ANR's equal employment opportunity policies may be directed to Linda Marie Manton, Affirmative Action Contact: University of California, Davis, Agriculture and Natural Resources, One Shields Avenue, Davis, CA 95616, (530) 752-0495.