



**AG +
OPEN
SPACE**
SONOMA COUNTY

L A N D F O R L I F E

Vital Lands Initiative

Science and Data-based Land Conservation



GIS Day | March 14, 2018

Allison Schichtel | Conservation GIS Analyst



**AG +
OPEN
SPACE**
SONOMA COUNTY

L A N D F O R L I F E

***The Sonoma County Agricultural Preservation
and Open Space District permanently protects
the diverse agricultural, natural resource, and
scenic open space lands of Sonoma County for
future generations.***





**AG +
OPEN
SPACE**
SONOMA COUNTY

L A N D F O R L I F E

- **Community vision**
- **Protection of 114,000 acres**
- **Spatial scale: County to project**
- **Temporal: now to forever**



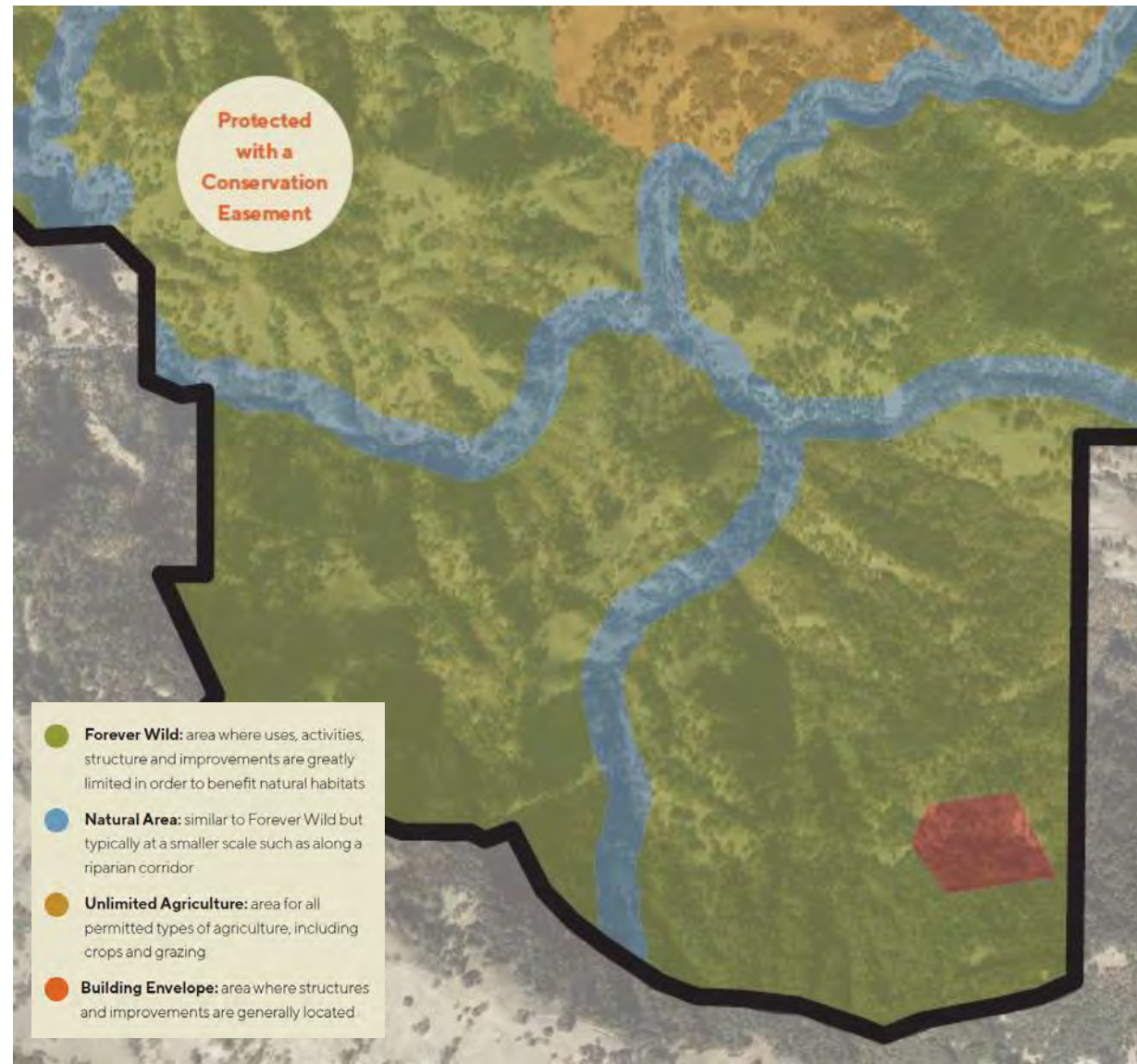
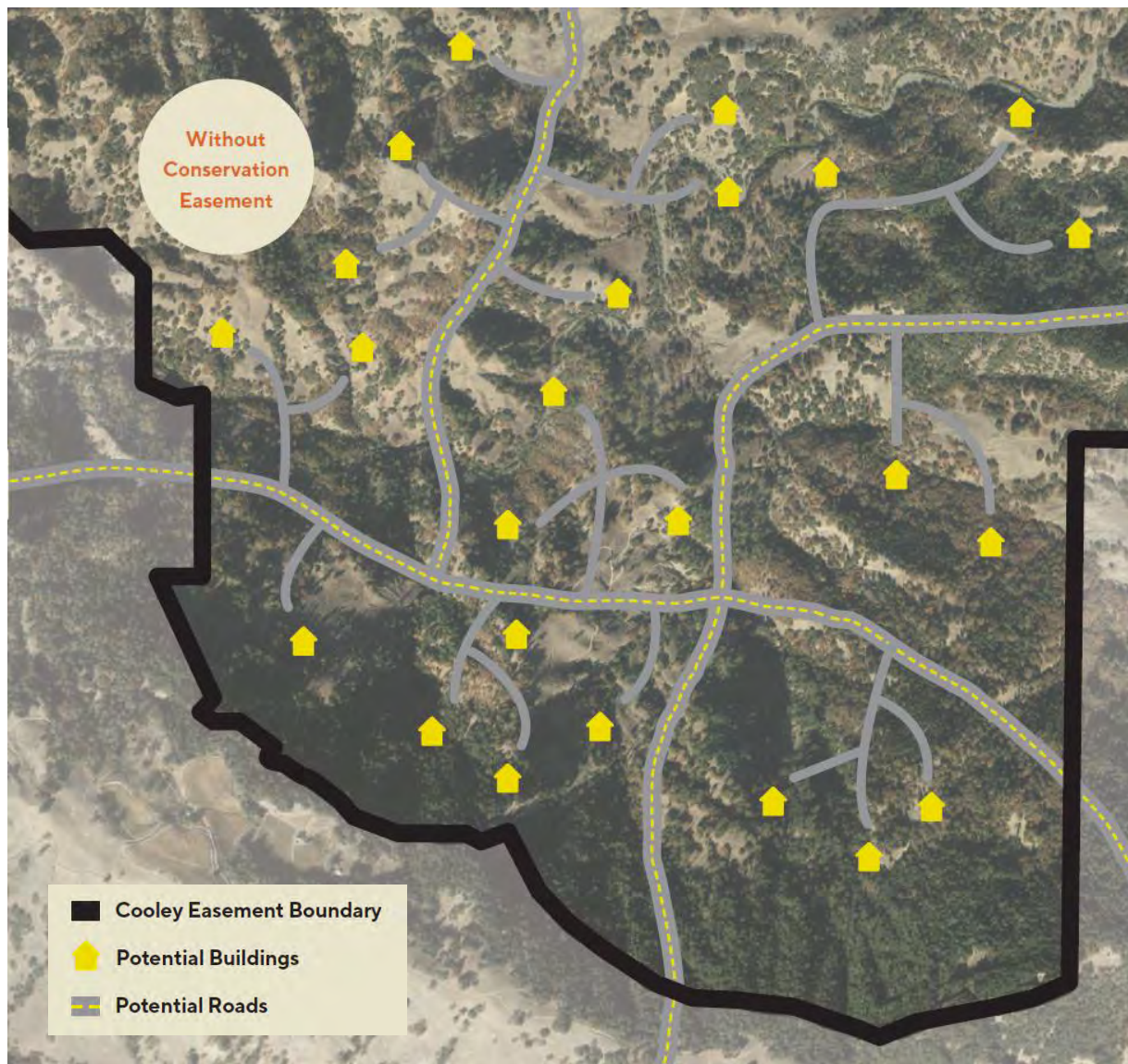


How We Work | Conservation Easements

- Voluntary/incentive based – willing sellers
- Partnerships: public trust investment/private land
- Multiple benefits (win : win : win)
- Perpetuity: forever is a long time!



How We Work | Conservation Easements





Building on a foundation of success.



Vital Lands Initiative

- Outlines goals, objectives, and strategies to achieve perpetual protection of highest priority working and natural lands in Sonoma County
- Provides a flexible decision-making framework that allows Ag + Open Space to incorporate new info, adapt, and make effective decisions given new opportunities



Outcomes on the Land | Goals

Agriculture

Protect lands that support diverse and productive agriculture in Sonoma County

Community Open Space

Protect and enhance open space and publicly accessible lands in and near Sonoma County cities and communities

Greenbelts

Protect open lands that surround and differentiate the County's urban areas

Natural Resources

Protect natural lands and aquatic habitats that support plants, wildlife, biodiversity, water resources, and other human benefits in Sonoma County

Recreation and Public Access

Ensure that the public has a range of opportunities to experience Ag + Open Space-protected lands

Scenic Views

Protect lands that contribute to the unique scenic character of Sonoma County





Outcomes on the Land | Open Space Designations

THE “WHAT”

- Rangeland
- Cultivated Agriculture
- Natural Vegetation
- Communities
- Rare Vegetation
- Old Growth and Late Successional Forests
- Wildlife Space and Movement
- Wetlands
- Salmonid-bearing Streams
- Riparian Corridors
- Habitat for Special Status Species
- Groundwater Basins and Recharge Areas
- Public Access
- Trail Connections
- Community Open Space
- Greenbelts
- Prominent Landscape Features



Outcomes on the Land | Open Space Designations

SO WHERE?

Use spatial data & tools to answer questions like:

Where are the places that support features that are important to protect?

Where are high priority places where multiple important features overlap (e.g. riparian + ag + scenic)?

Where are the places that provide additional benefits, such as carbon sequestration or clean drinking water?

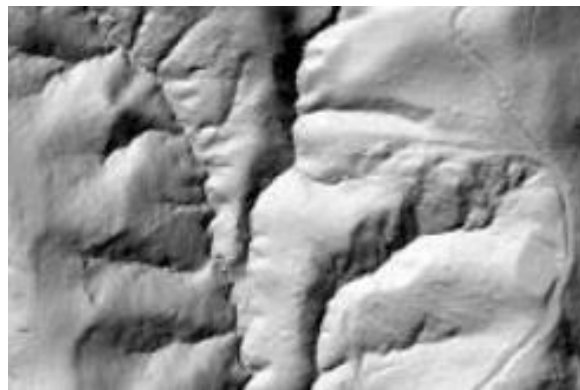
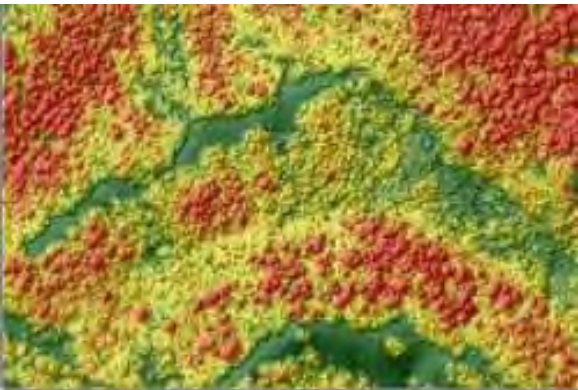


Outcomes on the Land | Maps + Data

SONOMA VEG MAP

SONOMA COUNTY VEGETATION MAPPING & LIDAR PROGRAM

High-Quality Data for Planning, Conservation and Resource Management



Wetlands + Streams Criteria

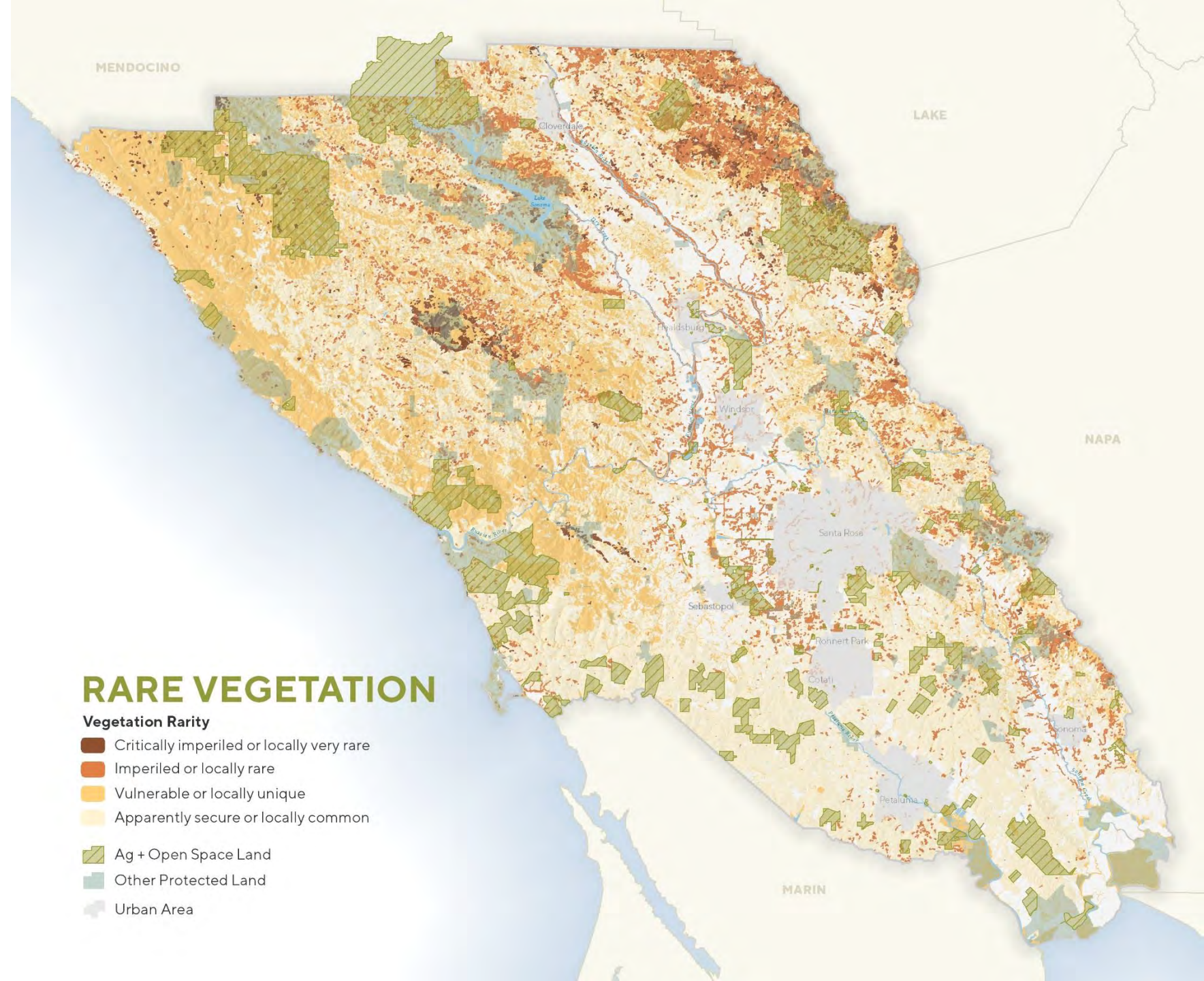
- All wetland features
 - Vernal Pool
 - Estuary
 - Tidal Salt Marsh
 - Freshwater Herbaceous
 - Lake/Reservoir
- Streams that support salmonid populations
 - Coho salmon
 - Chinook salmon
 - Steelhead
- Riparian corridor

Stay tuned!



Rare Vegetation Criteria

- State rarity rank per Survey of CA Vegetation
- Percent area in Sonoma County (i.e. local rarity)



Scenic Criteria

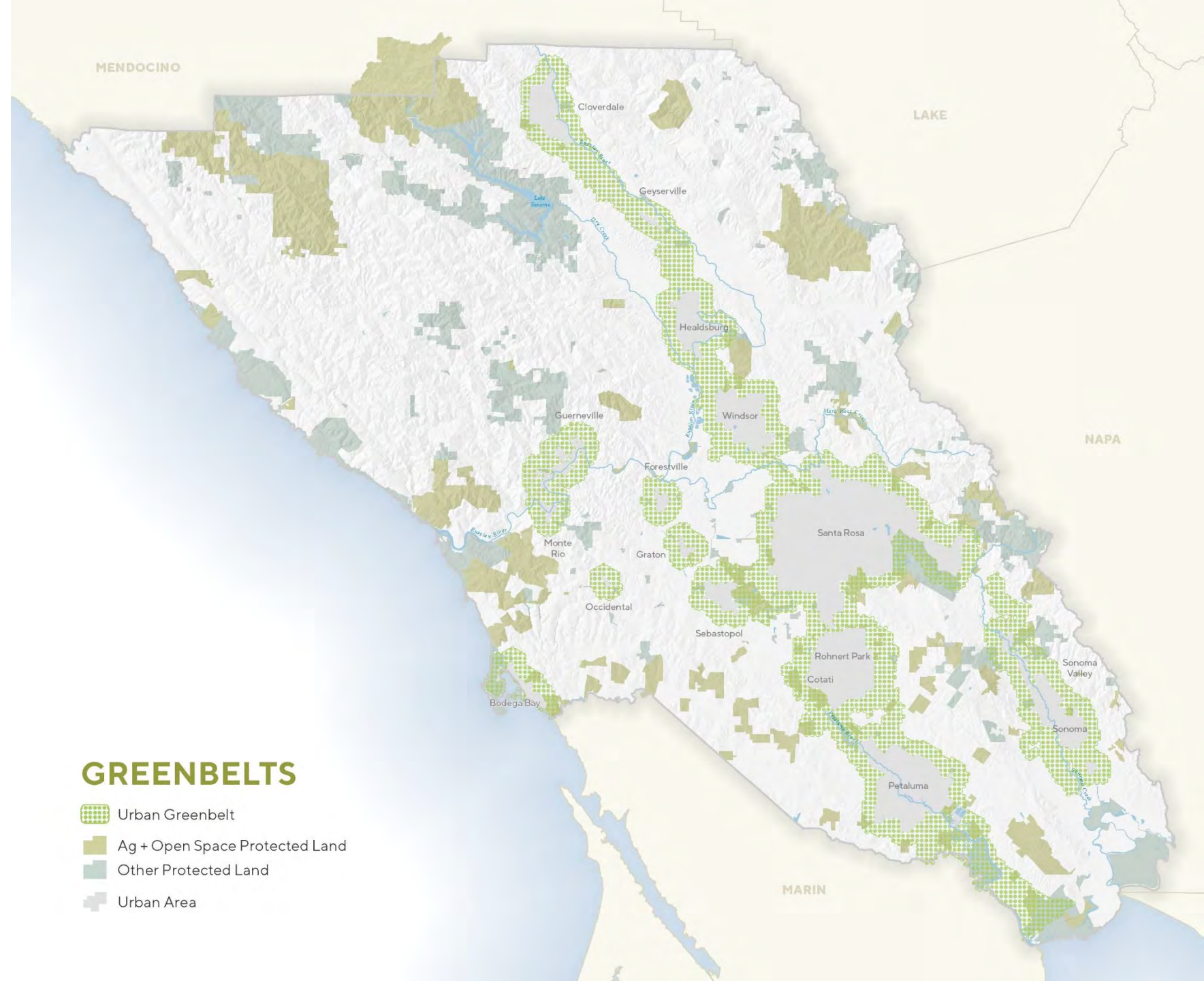
- Visible from communities
 - Census block centroids within UGBs and USAs
- Visible from highly traveled transportation corridors
 - Top 20 based on traffic count data
- Visible from General Plan 2020 Scenic Corridors

* Separate analysis for hillsides and ridgetops vs. valleys



Greenbelt Criteria

- Ownerships adjacent to UGBs or USAs
- Ownerships within ½ mile buffer around UGBs or USAs
- Size of ownership
- Percent imperviousness of ownership
- Inclusion in General Plan 2020 Community Separator

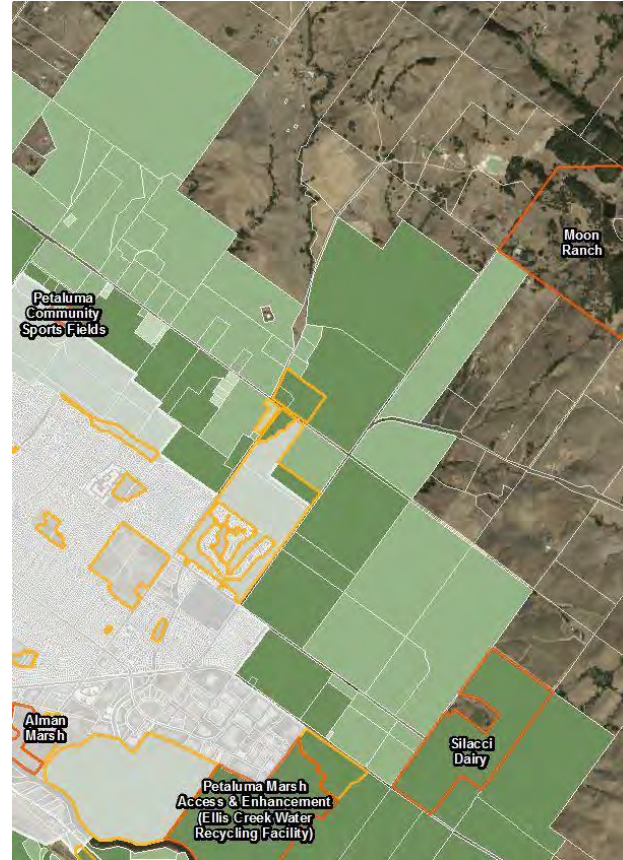




Prioritizing Land for Conservation

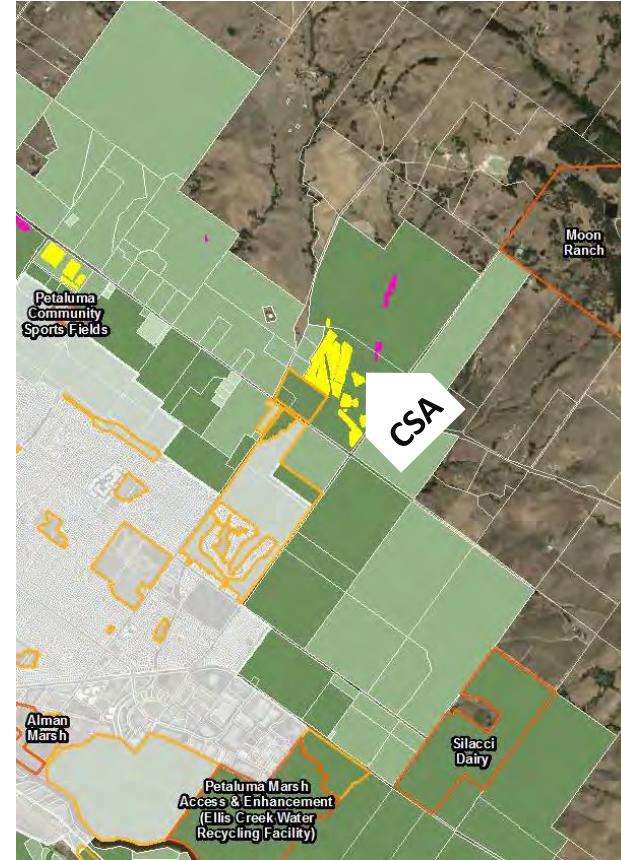
Greenbelt Strategies

- Prioritize projects that provide residents with access to **locally grown and produced food**
- Prioritize projects that **increase passive or low intensity recreational opportunities** in the greenbelt



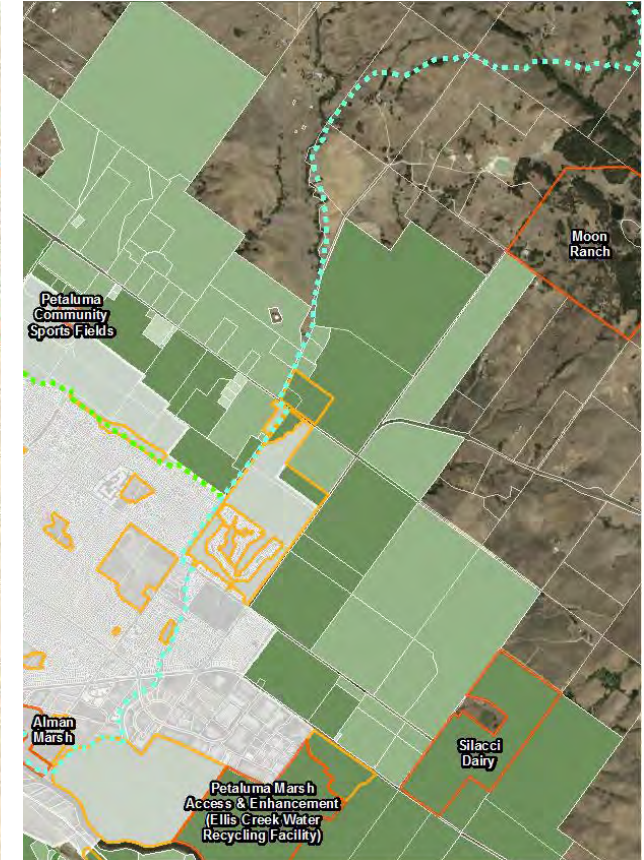
Greenbelt

Higher ← Lower



Local Food

Annual cropland + perennial cropland



Trail Connection

Bay Area Ridge Trail
planned alignment



Draft report out now!

We want your feedback!
<http://www.sonomaopenspace.org/>



Community Meetings

- Sat, 3/17** **Community Church of Sebastopol | 10:00am – 12:00pm**
- Mon, 3/19** **Sonoma Veterans Memorial Building | 6:00pm – 8:00pm**
- Tue, 3/20** **Bodega Bay Grange | 6:00pm – 8:00pm**
- Wed, 3/21** **Petaluma Veterans Memorial Building | 6:00pm – 8:00pm**
- Mon, 3/26** **Sea Ranch – Del Mar Center Hall | 6:00pm – 8:00pm**
- Wed, 3/28** **Healdsburg Villa Chanticleer | 6:00pm – 8:00pm**
- Thurs, 3/29** **Santa Rosa Veterans Memorial Building | 6:00pm – 8:00pm**
- Sat, 3/31** **Cloverdale Veterans Memorial Building | 10:00am – 12:00pm**



**AG +
OPEN
SPACE**
SONOMA COUNTY

L A N D F O R L I F E

THANK YOU!

Stop by the Ag + Open Space table for more info!

Allison Schichtel | allison.schichtel@sonoma-county.org