



# Geographic Information Systems (GIS) for Agriculture: Rangeland Focus Workshop

Thursday, May 7th, 2015, 11am to 4pm

University of California  
Agriculture and Natural Resources

## Hopland Research and Extension Center

Informatics and GIS Program

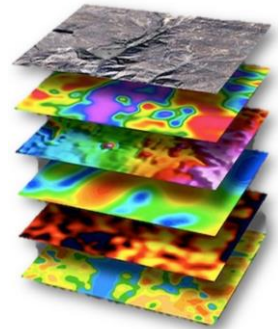
4070 University Road, Hopland, CA

[http://hrec.ucanr.edu/About\\_Us/Directions\\_Map](http://hrec.ucanr.edu/About_Us/Directions_Map)

**Goal:** Provide an overview of geospatial technology to agricultural practitioners and Cooperative Extension educators with hands on experience using practical examples.

**Audience:** UC Cooperative Extension Advisors and Specialists as well as public and private resource professionals.

**Workshop Content:** This workshop has been designed for participants interested in rangeland applications with GIS, with little to no experience in GIS. An introductory presentation will get you up to speed on what kind of analyses GIS may be used for, as well as the basic structures of spatial data. After this brief lecture you will follow an interactive exercise that will introduce you to your choice of software (ArcGIS or Quantum GIS) while using free and open source online data to analyze and map rangelands in the California foothills.



This course content is the result of a collaborative effort between UC ANR IGIS Statewide Program: <http://igis.ucanr.edu>, and UC Berkeley's Geospatial Innovation Facility (GIF): <http://gif.berkeley.edu/>.

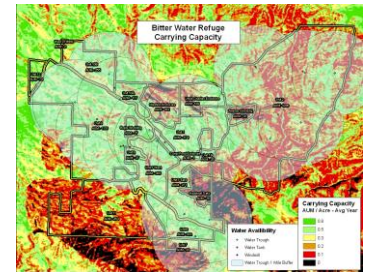
**Requirement:** Participants must bring a laptop computer with a recent version of either (or both) ArcGIS or Quantum GIS installed.

**ArcGIS** can be obtained for UC ANR owned computers free of charge at:

[http://igis.ucanr.edu/Resources/ESRI\\_Software/](http://igis.ucanr.edu/Resources/ESRI_Software/) **NOTE:** Please download the ArcGIS software and request a user license several days in advance of the workshop to ensure that it is properly functioning before the workshop date.



**Quantum GIS** is a free and open source GIS program that can be downloaded here: <http://www.qgis.org/en/site/> **NOTE:** The 32-bit Windows version of QGIS seems to be more glitch free than the 64 bit version, even on a 64-bit computer.



**When & Where:** May 7<sup>th</sup>, 2015, from 11am to 4pm, with a one hour lunch break from 12pm to 1pm. Lunch will be provided.

4070 University Road, Hopland, Ca. 95449

Directions and map link: [http://hrec.ucanr.edu/About\\_Us/Directions\\_Map](http://hrec.ucanr.edu/About_Us/Directions_Map)

**Cost:** \$30 for members of UC ANR (account # and contact information required), and \$60 for non-UC affiliates.

The course cost will include a meal and refreshments. UC ANR members' costs will be partially supported by the IGIS Statewide Program.

**Register:** Go to <http://ucanr.edu/survey/survey.cfm?surveynumber=14834> to register. Registration is limited to 25 participants, so please register early.

**Contact:** Sean Hogan, 530-750-1322, [sdhogan@ucanr.edu](mailto:sdhogan@ucanr.edu)

Partial support for this workshop is provided through the IGIS Statewide Program

The University of California Division of Agriculture & Natural Resources (ANR) prohibits discrimination or harassment of any person in any of its programs or activities (Complete nondiscrimination policy statement can be found at <http://ucanr.org/sites/anrstaff/files/107734.doc>)

Inquiries regarding ANR's equal employment opportunity policies may be directed to Linda Marie Manton, Affirmative Action Contact: University of California, Davis, Agriculture and Natural Resources, One Shields Avenue, Davis, CA 95616, (530) 752-0495.